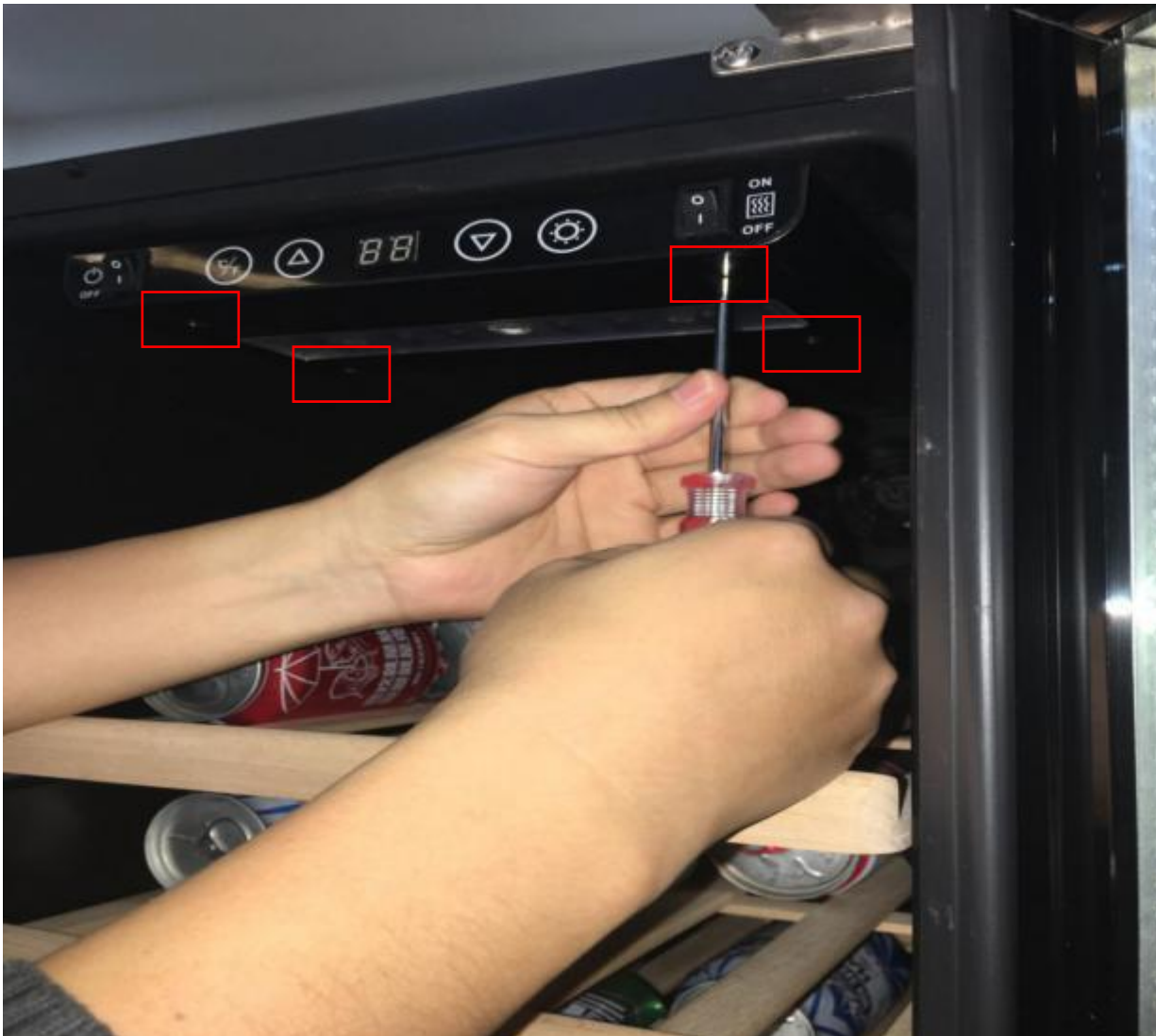


1. Unscrew the control box (at the bottom of the box) and take it off.



Kalamera

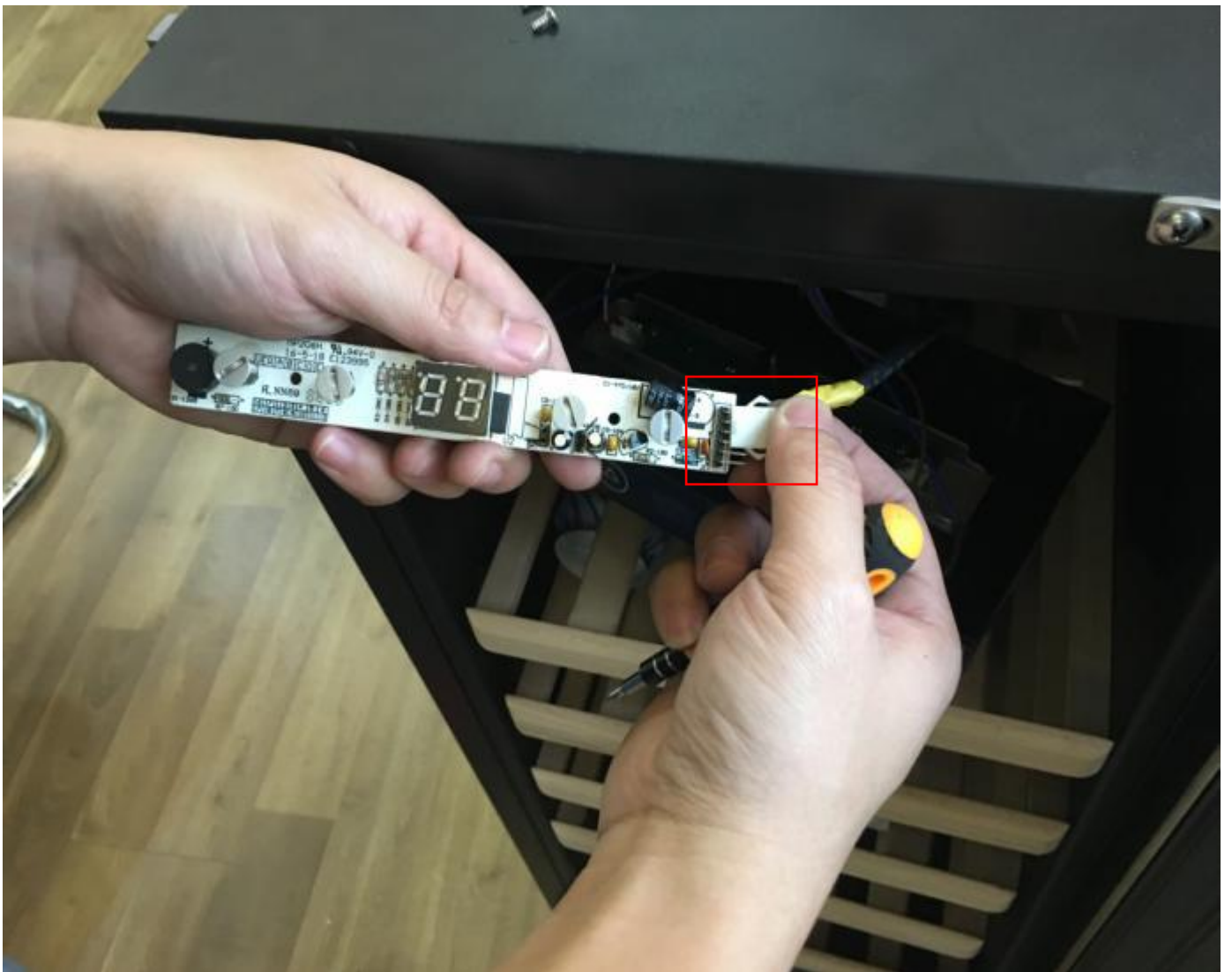


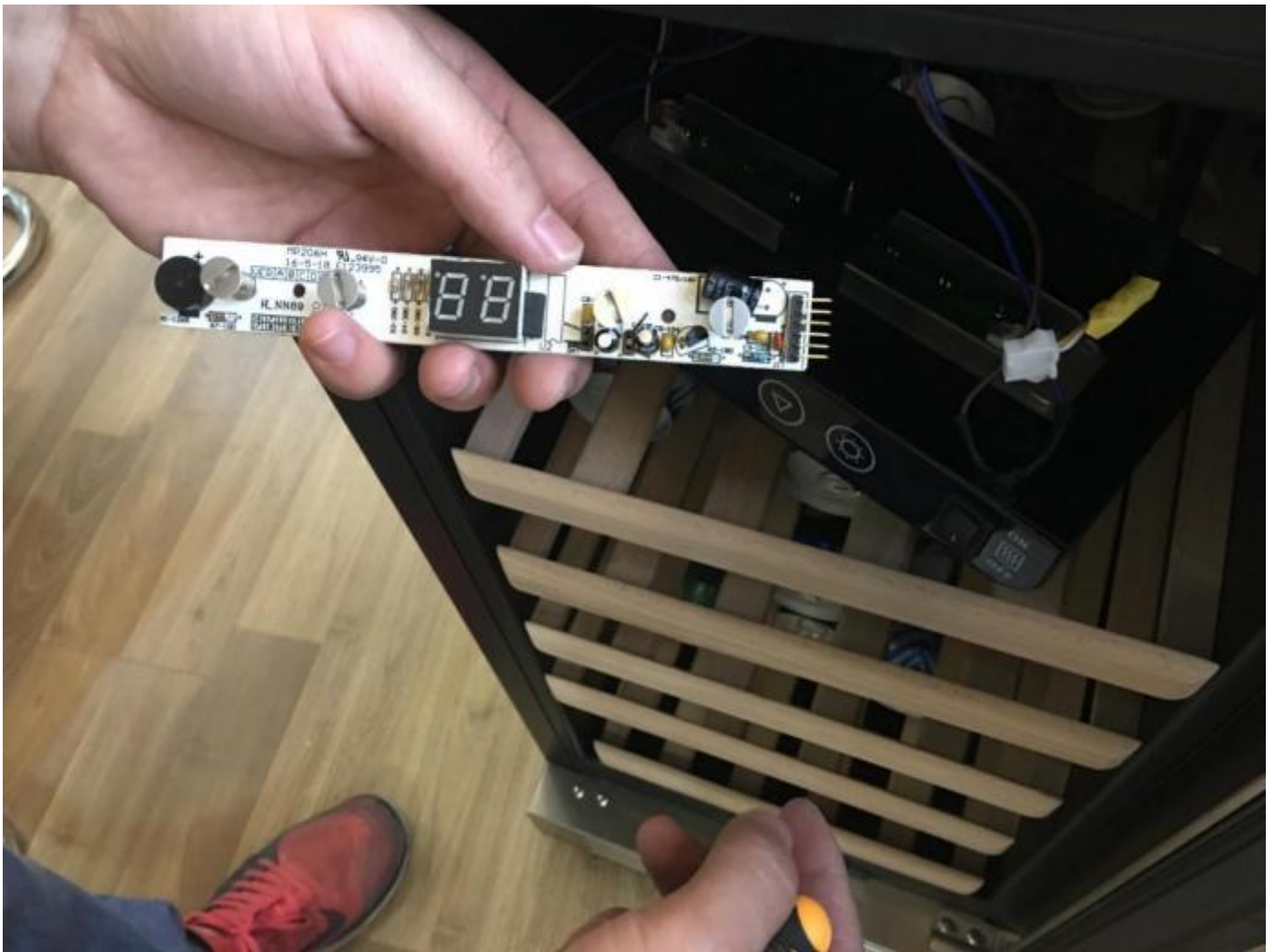
Kalamera

2. Unscrew the control board



3. Disconnect the wirings.





Kalamera

4. Replace with a new control board, install it in the holder and connect the wirings.



Kalamera

5. Assemble the control box and fix it by twisted screws.



Kalamera



6. Finish.

Kalamera