

1. Unscrew the back plate



Kalamera

2. Unscrew the box on the left hand side and take it off.



Kalamera



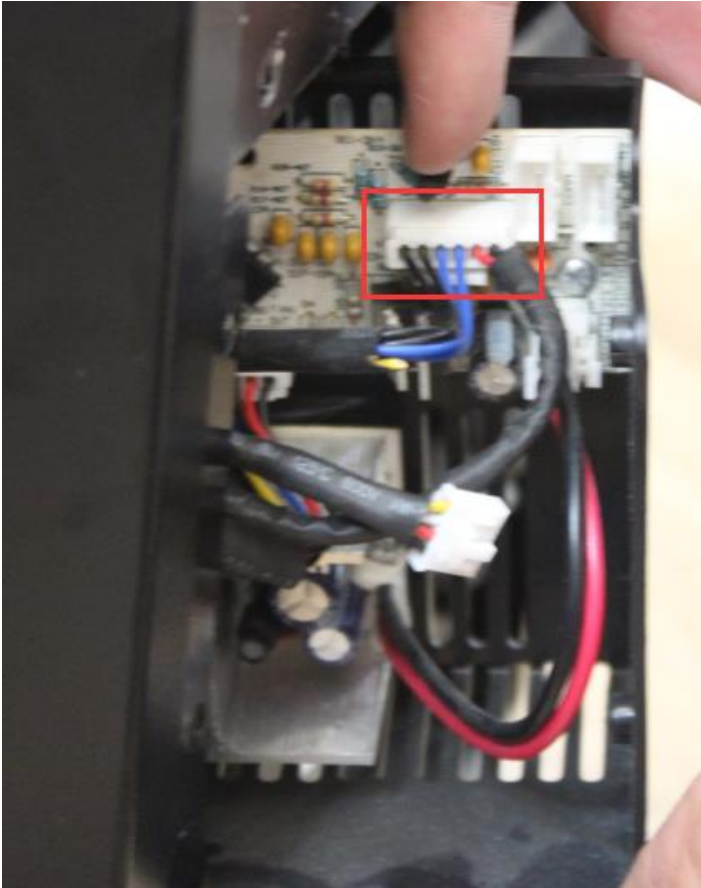
3. Disconnect the wirings by press and pull off the connectors. All 4 of the connectors are different from each other, so you will not make mistake on putting them back.

1st connector

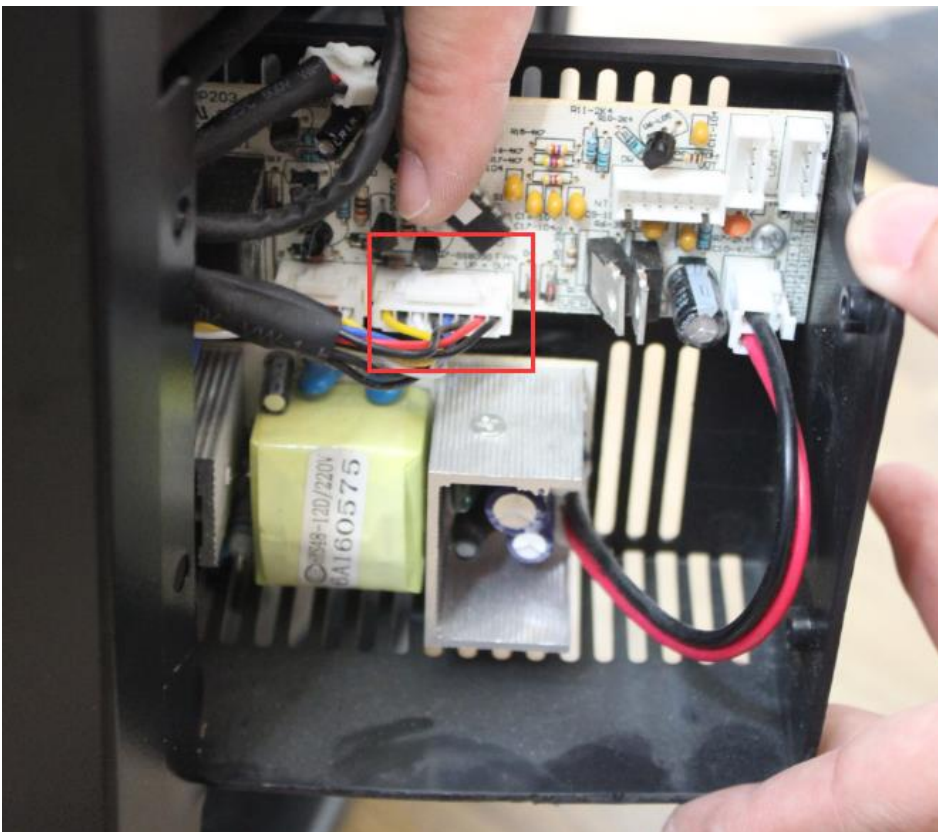


Kalamera

2nd connector

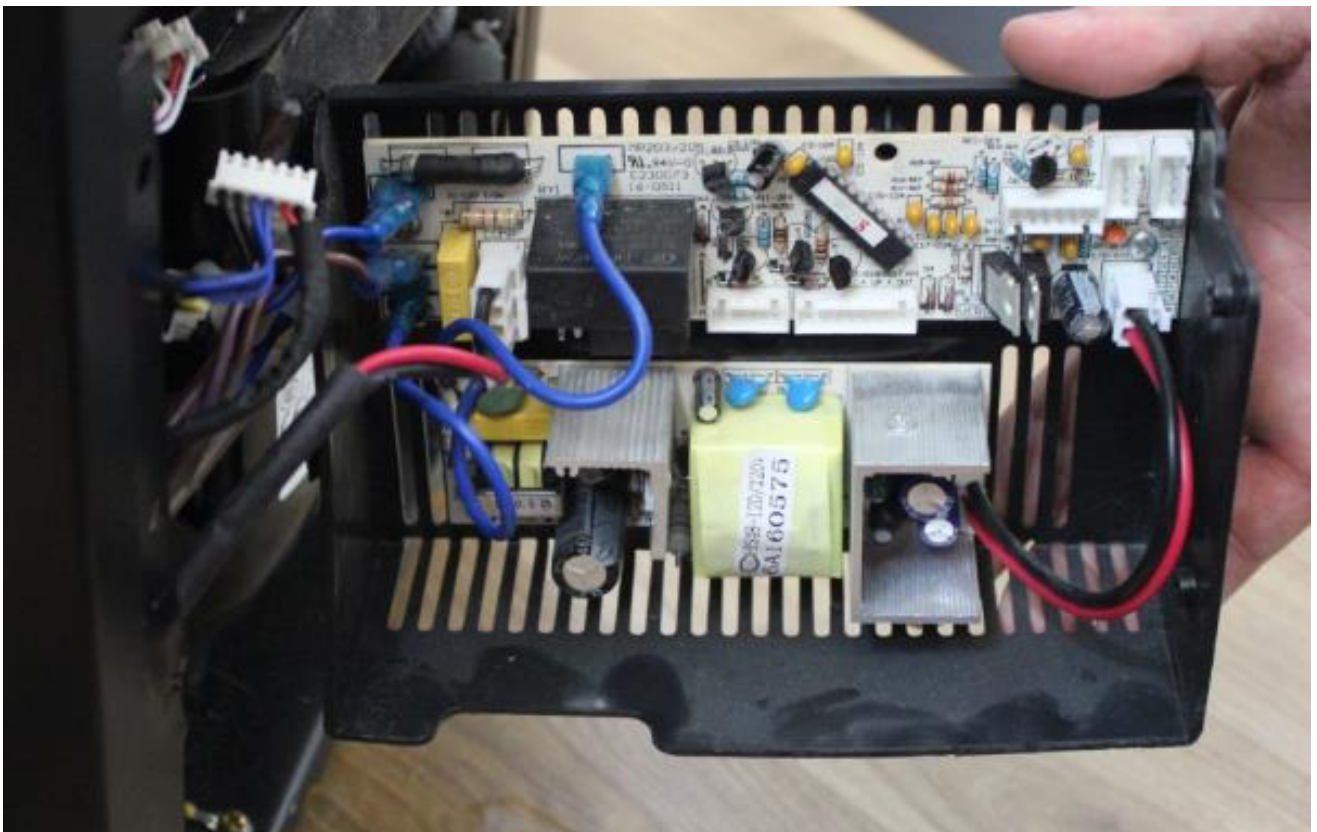
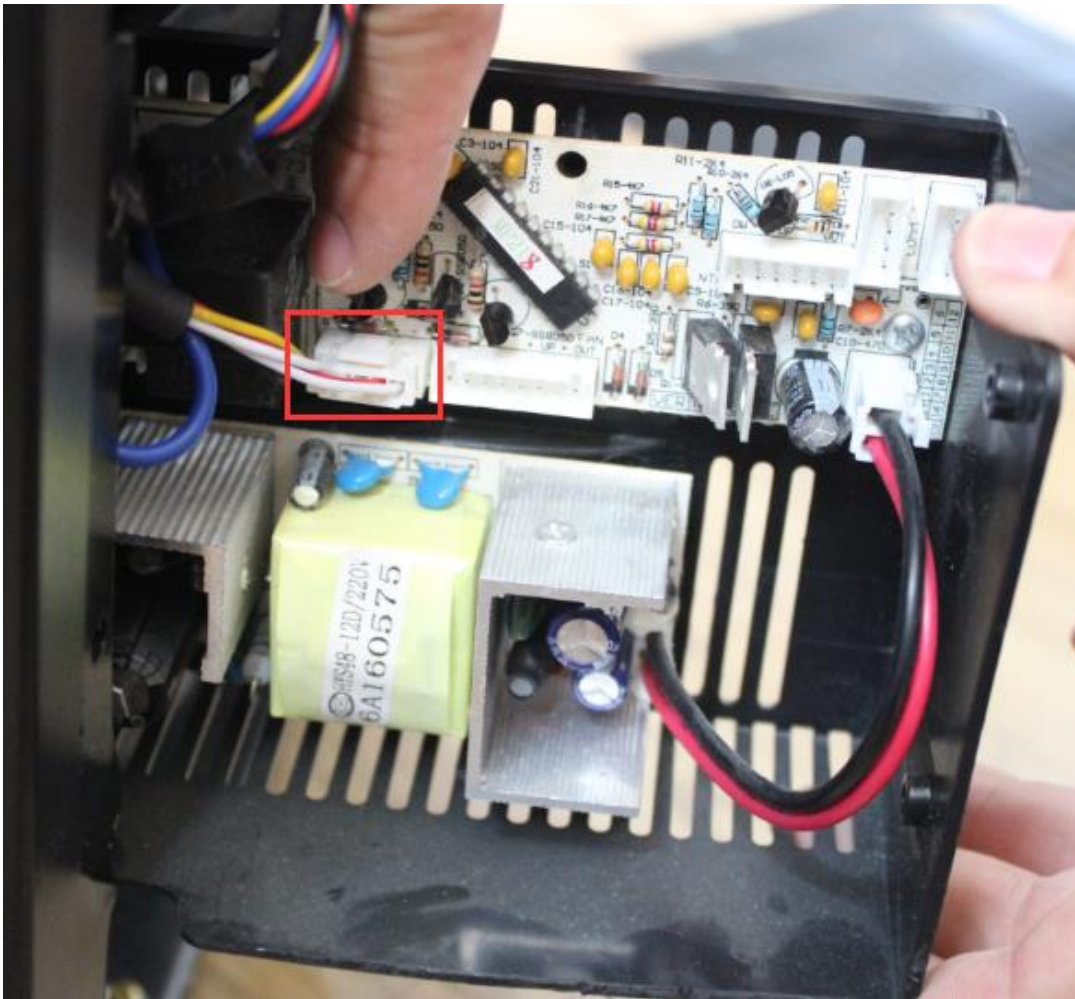


3rd connector



Kalamera

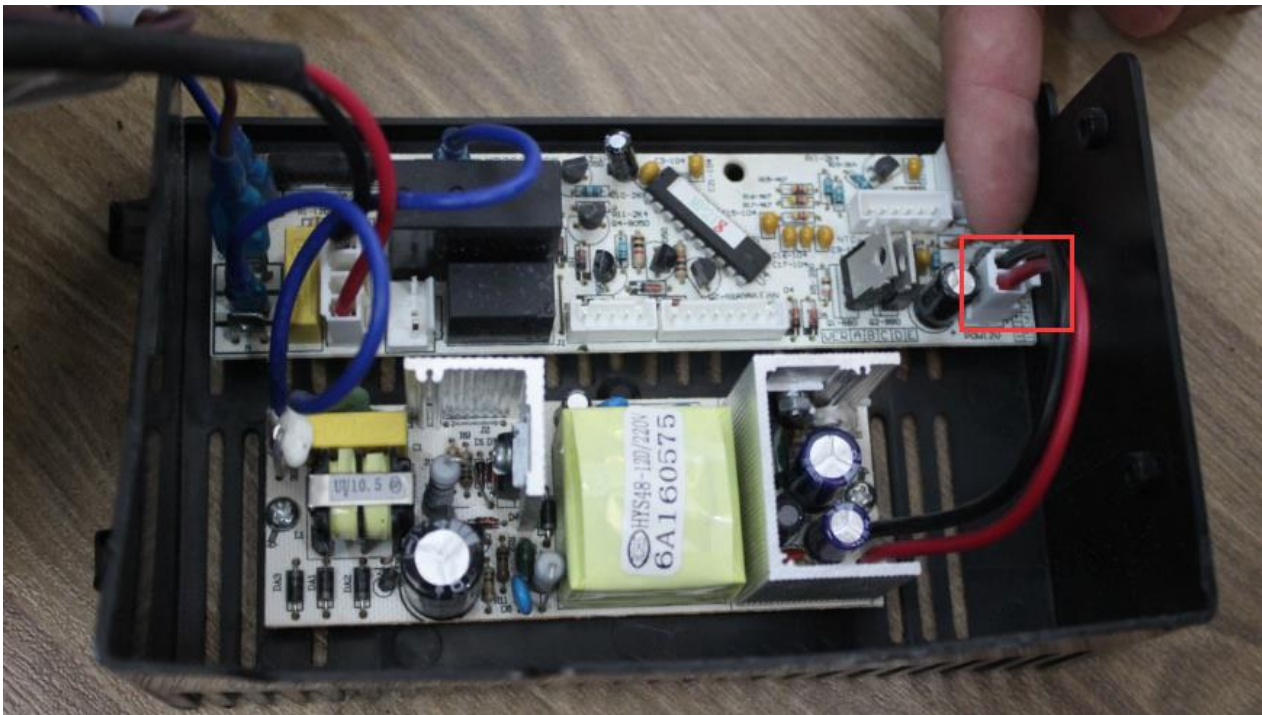
4th connector



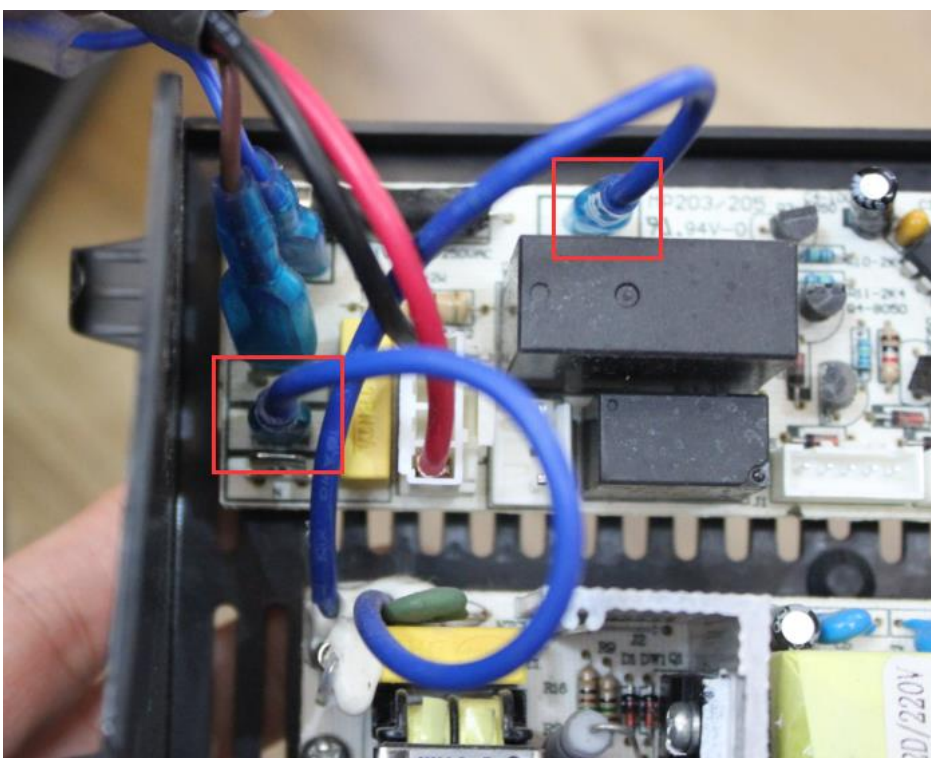
Kalamera

4. Disconnect the wirings of the main control board and power board (If it is difficult to pull off by hand, please use tools, like pliers)

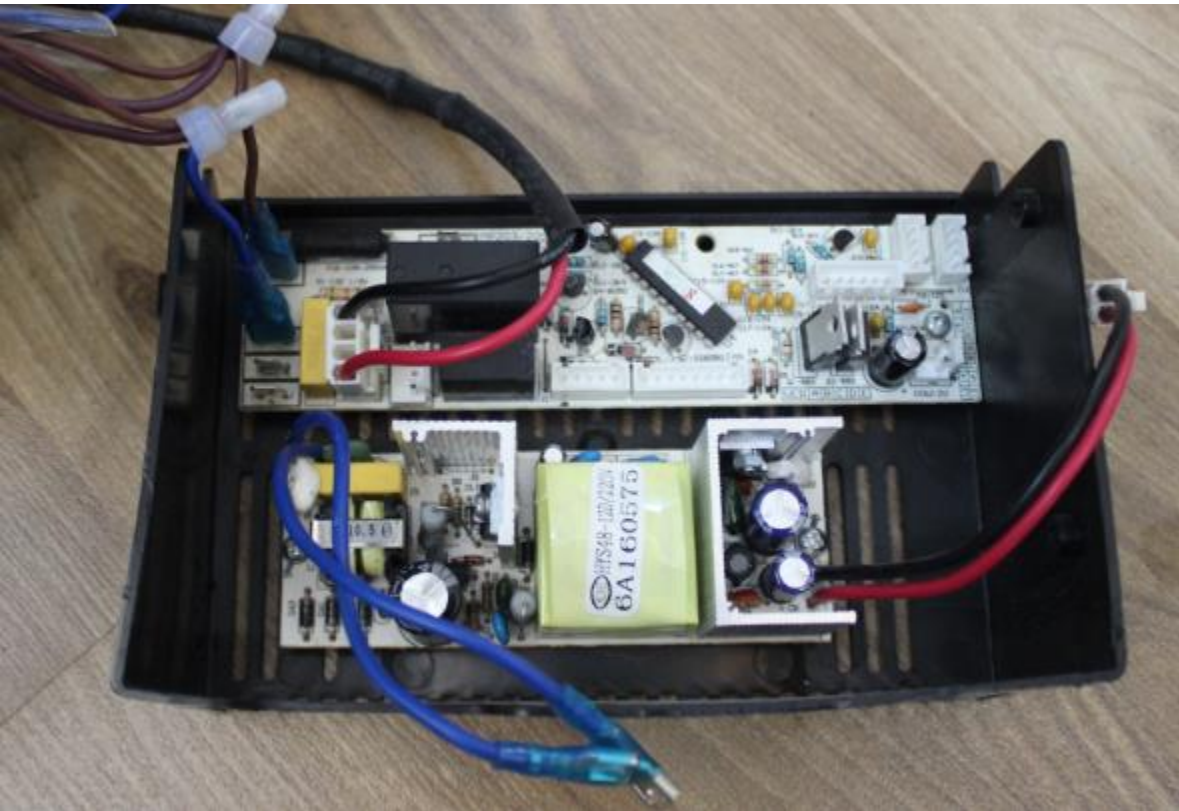
1st connector



2nd & 3rd connector (please remember the position of each wire, they are crossing each other to the connector)

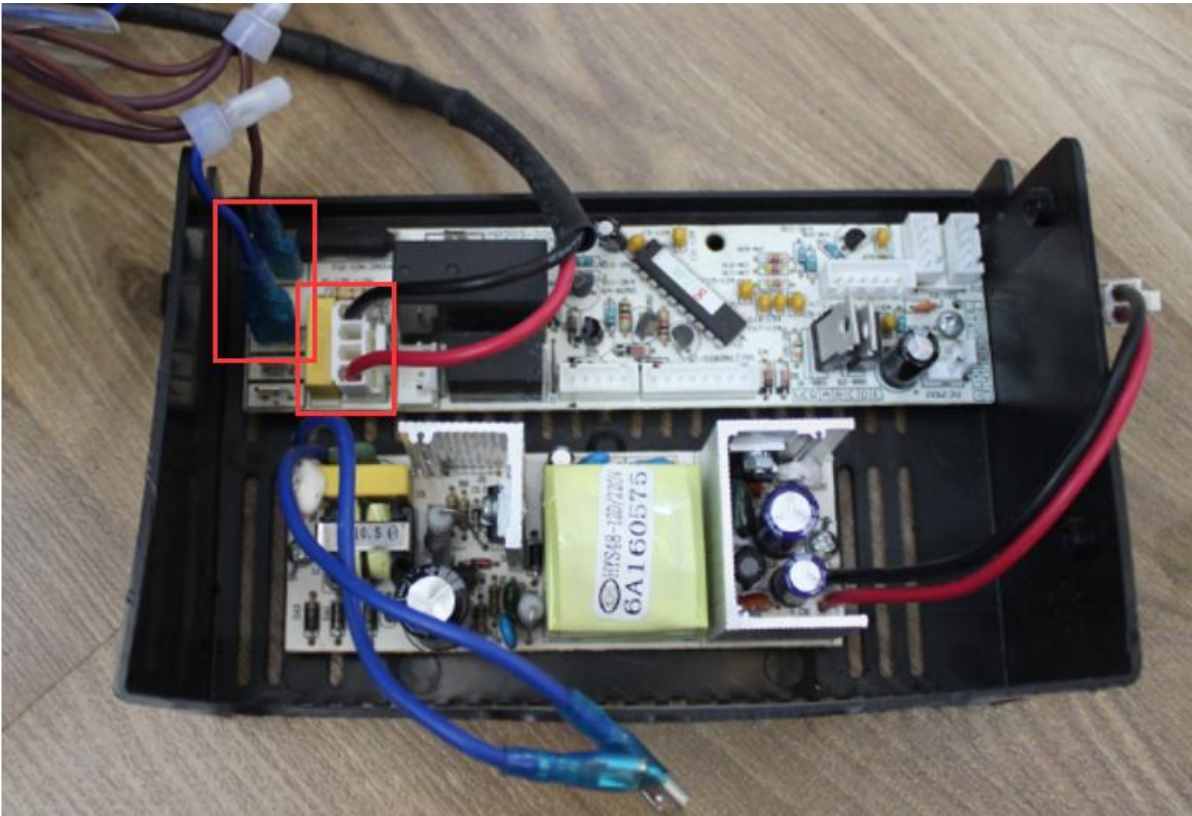


Kalamera

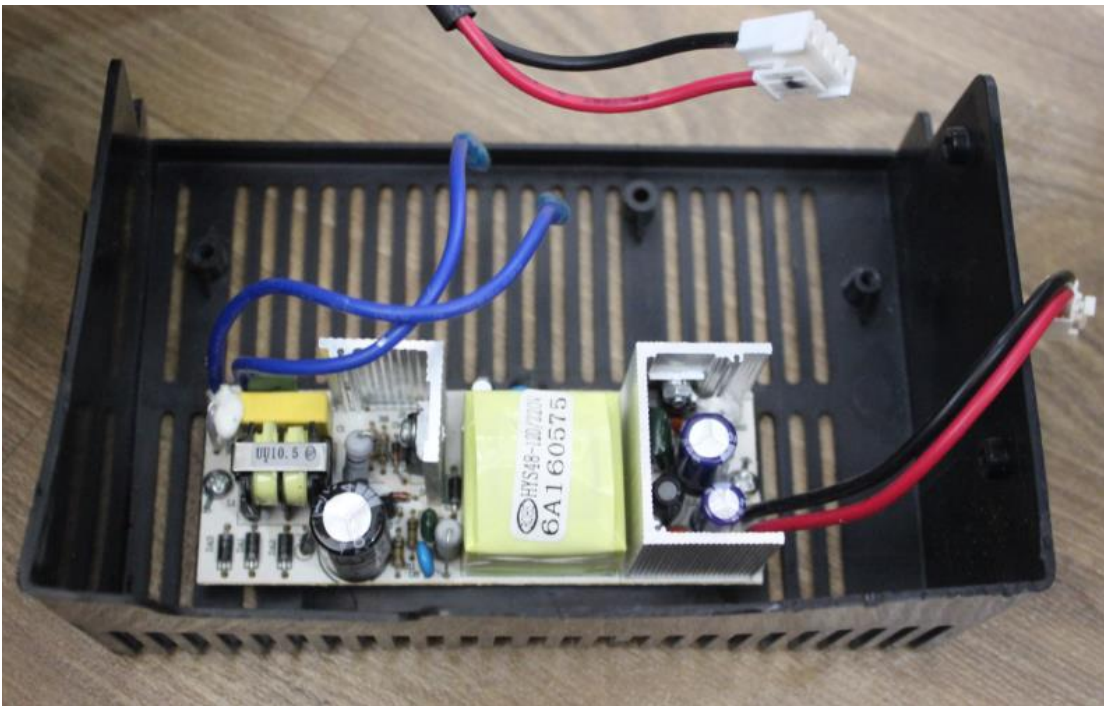


Kalamera

4th connector (please remember the position of each wire, they are crossing each other to the connector)

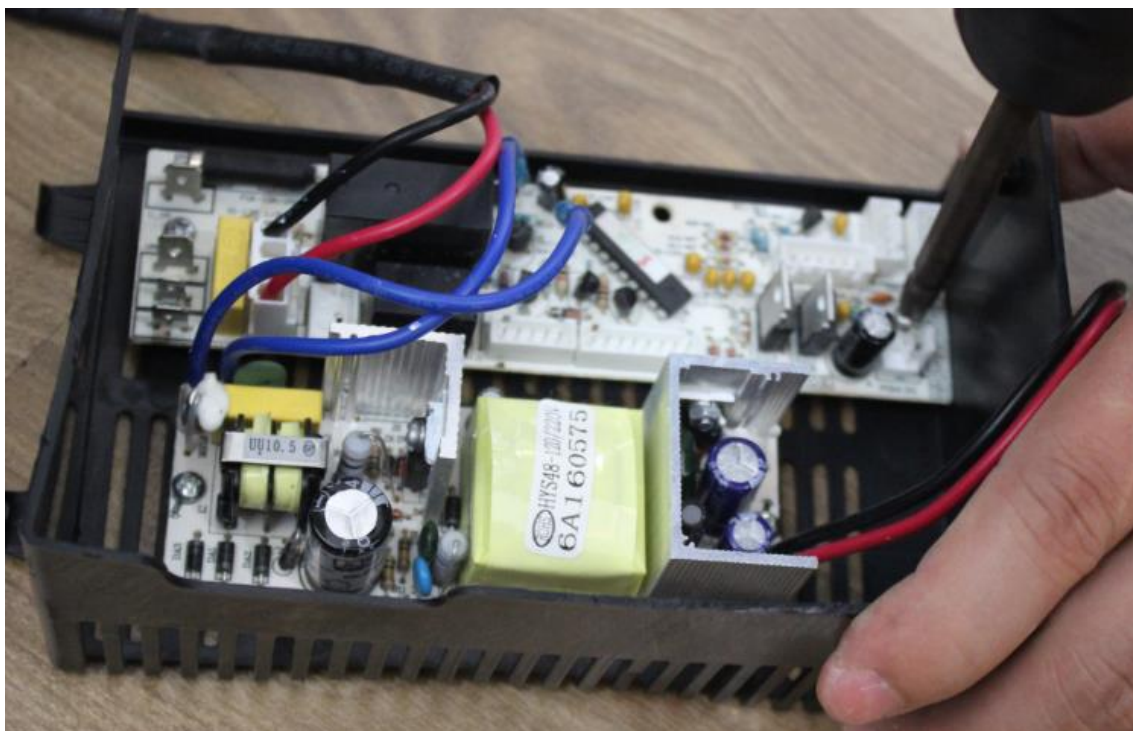


5. Unscrew the power board and take it off.



Kalamera

6. Replace with a new main control board and fix it with screws.



7. Connect the wires according to the previous steps. Fix the box and screw it.



8. Assemble the plate back on.

Kalamera



9. Finish.

Kalamera